

**PHILIPS**

Lighting

MultiOne



## Specification Sheet

# LCN8650/11

## MultiOne interface

## USB2ZigBee

- Connectivity through USB port (USB port also powers the device) for easy and quick installation on any host computer.
- COM port interface using standard drivers operating as virtual communication port under Windows 7 OS enabling simple data connections.
- Operates in 2.4 GHz band using 3 channels ensuring maximum connectivity and stability.

# Specifications

## General Characteristics

Network protocol	Compliant to IEEE 802.15.4./ ZigBee2007 PRO
Chip set	TI C2530F256
Operating frequency	2.4 GHz
Channels	3 (15, 20 and 25)
RF power	16 dBm
Antenna type	2 dBi Omni MMCX
Transmission distance	500 m in line of sight
Transmission rate	Max. 250 kbps
Windows OS support	7 or higher
Supported network type	Mesh
Interface	USB 2.0
Power supply	5 Vdc (through USB port)
Power consumption	0.3 W
Receiver sensitivity	-92 dBm

## Temperature Characteristics

Working temperature	-20 to 70 °C, Max.90% RH
ESD protection	4 kV by contact

## Housing

Dimension (l x w x h)	80 x 43 x 11 mm (3.15 x 1.69 x 0.43 in)
Weight	25 g



## Ordering Data

Type	Order code	EAN1	EAN3	EOC
LCN8650/11 MultiOne interface USB2ZigBee	9137 003 59203	8718291 747659	8718291 747666	747659 00

© 2019 Signify Holding. All rights reserved. Specifications are subject to change without notice. No representation or warranty as to the accuracy or completeness of the information included herein is given and any liability for any action in reliance thereon is disclaimed. Philips and the Philips Shield Emblem are registered trademarks of Koninklijke Philips N.V. All other trademarks are owned by Signify Holding or their respective owners.



[www.philips.com/lighting](http://www.philips.com/lighting)

# PHILIPS

MultiOne interface  
USB2ZigBee

LCN8650/11



## Installation Instructions

Instructions d'installation  
Instrucciones de instalación

Istruzioni per l'installazione  
Installatie-instructies

Installationsanweisungen  
インストール手順

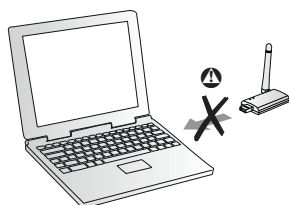
安裝指示书  
پیکرتال تاداشیرا

1

Request User Software Key

[www.philips.com/multione](http://www.philips.com/multione)

- Windows 7 (or higher) OS with Internet Explorer
- Microsoft .NET Framework 4.6.1 (or higher)
- Min. 45 MB free hard disk space
- One free USB 2.0 port
- Internet connection



2



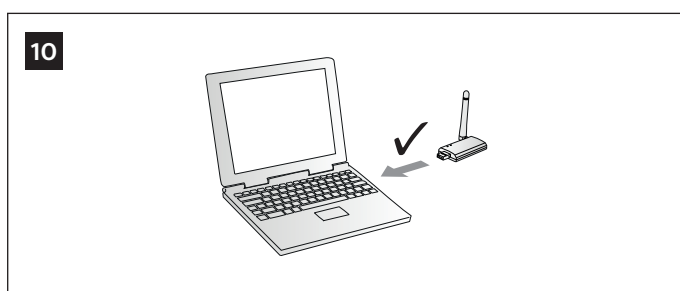
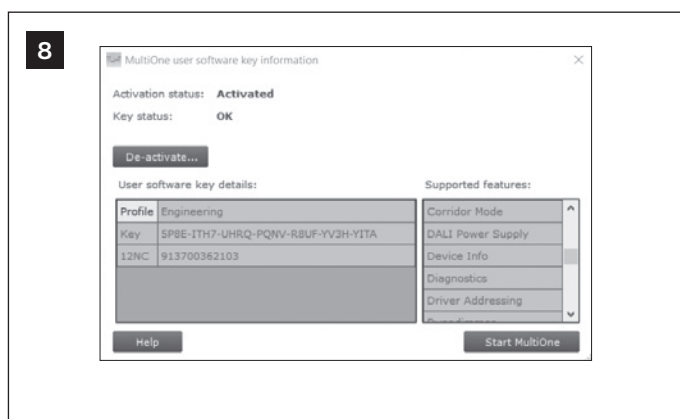
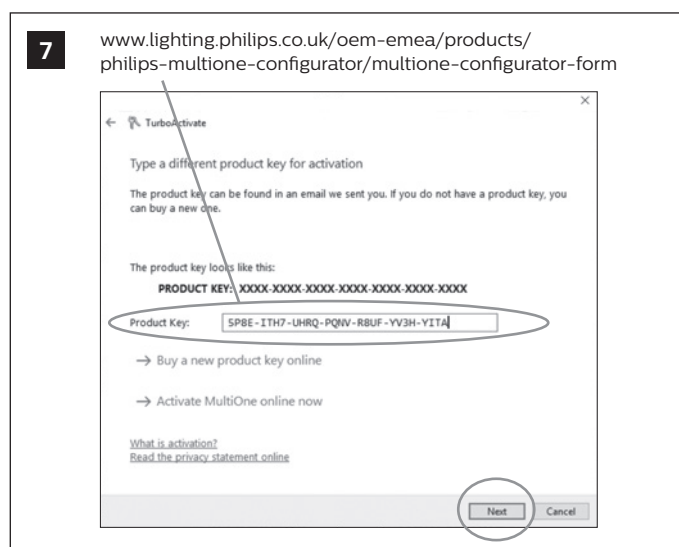
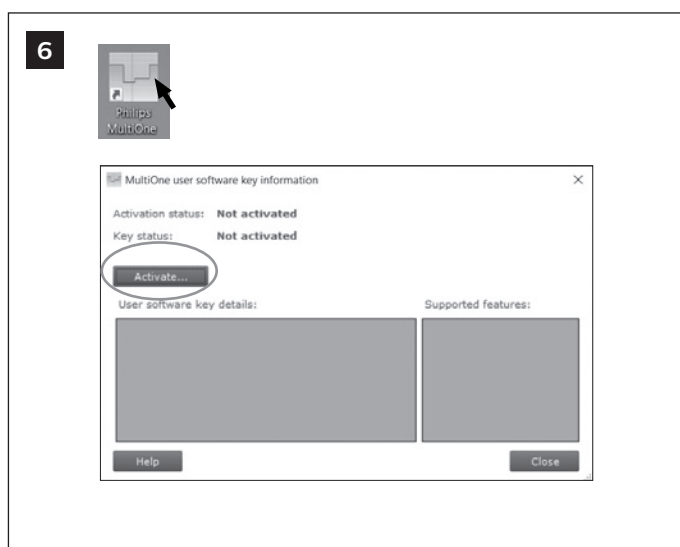
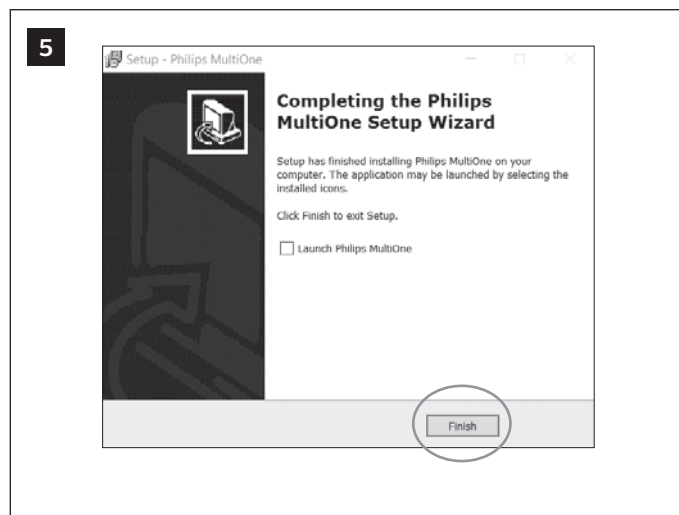
Download  
[www.philips.com/multione](http://www.philips.com/multione)



3

Philips MultiOne.exe





Hereby, Philips Lighting declares that the radio equipment type LCN8650/11 is in compliance with Directive 2014/53/EU. The full text of the EU declaration of conformity is available at the following Internet address: <http://www.philips.com/red>